

DF60 (A376)

PARTS CATALOG

INTRODUCTION

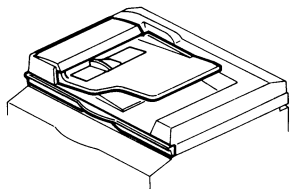
This chapter instructs you the numbers and names of this parts on this machine.

INDEX to PARTS CATALOG

Location of Unit	2
1 Exterior (A376)	4
2. Original Feed Section1(A376)	6
3. Original Feed Section2(A376)	8
4. Original Feed Section3(A376)	10
5. Transport Section (A376)	12
6. Inverter and Exit Section(A376)	14
7. Electrical Section (A376)	16
8. Decal and Document (A376)	18
Parts Index	21

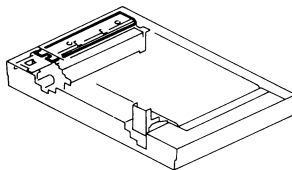
LOCATION OF UNIT

1. EXTERIOR (A376)



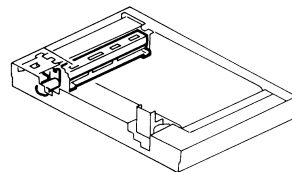
See Page 4

2. ORIGINAL FEED SECTION 1 (A376)



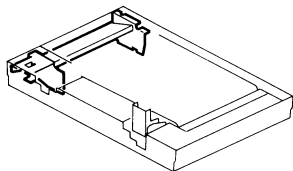
See Page 6

3. ORIGINAL FEED SECTION 2 (A376)



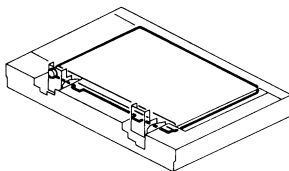
See Page 8

4. ORIGINAL FEED SECTION 3 (A376)



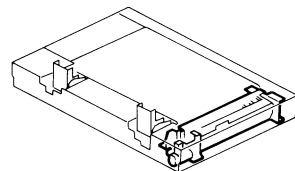
See Page 10

5. TRANSPORT SECTION (A376)



See Page 12

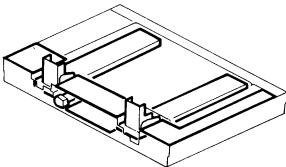
6. INVERTER AND EXIT SECTION (A376)



See Page 14

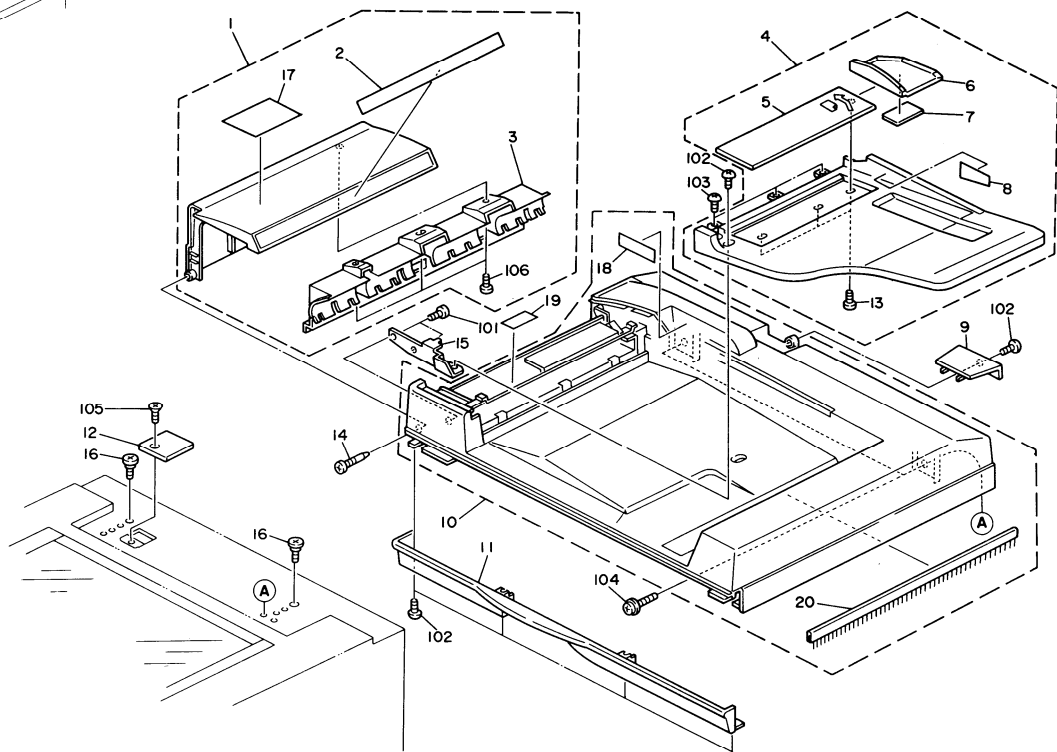
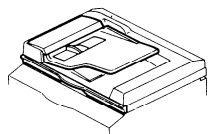
LOCATION OF UNIT

7. ELECTRICAL SECTION (A376)



See Page 16

1. EXTERIOR (A376)



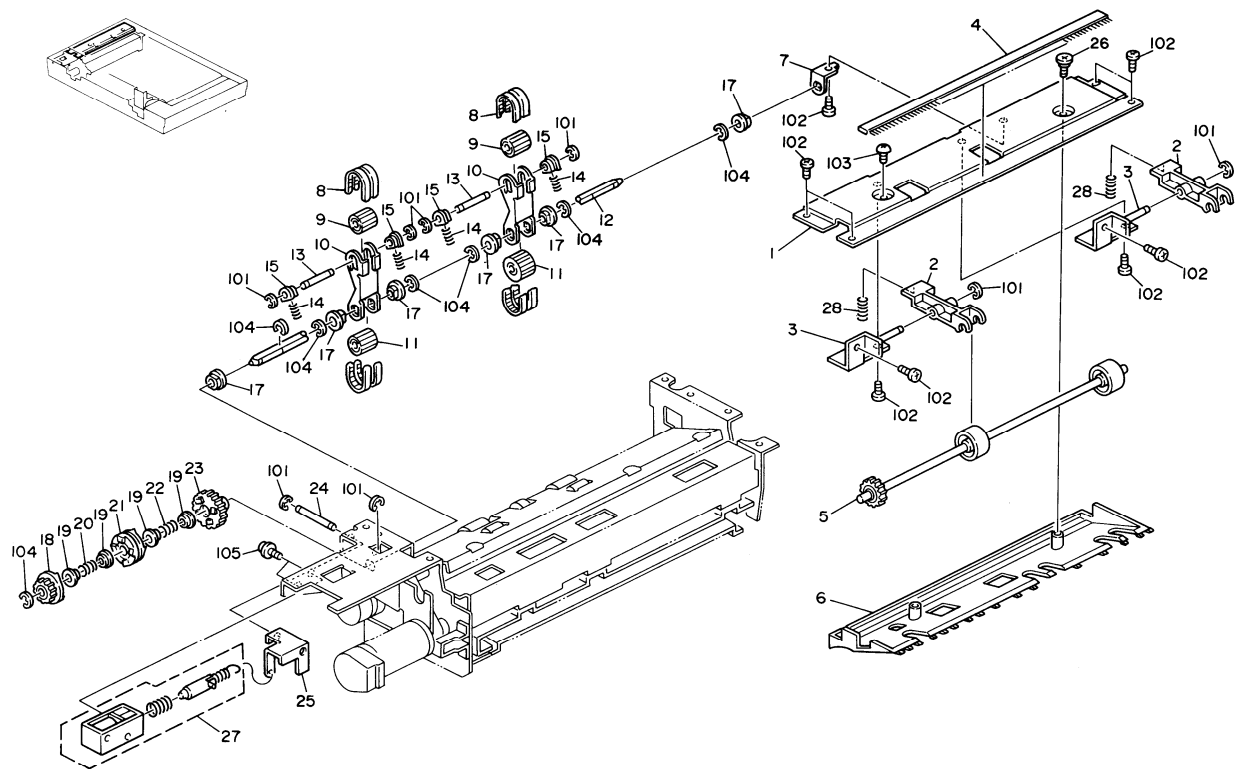
1. EXTERIOR (A376)

Index No.	Part No.	Description	Q'ty Per Assembly
1	A376 4543	Left Cover - LT	1
1	A376 4541	Left Cover - A4	1
2	A376 6016	Decal - Original Size - LT	1
2	A376 6011	Decal - Original Size - A4	1
3	A376 1261	Inverter Guide	1
4	A376 4561	Original Table	1
5	A376 4581	Side Fence Rail	1
6	A376 4591	Side Fence	1
7	A376 4599	Side Fence Pad	1
8	A376 6021	Decal - Original Table	1
9	A376 4611	Main Board Cover	1
10	A376 4501	Upper Cover	1
11	A376 4521	Front Lower Cover	1
12	A096 1281	Rear Top Cover	1
13	5875 2088	Shoulder Screw - M4	3
14	5446 2824	Screw - Duplex Guide Plate	2
15	A376 4125	Grip Bracket	1
16	A376 4911	Stepped Screw - Left Hinge	2
17	A376 6031	Decal - Misfeed Removal	1
18	A376 4651	Indicator Panel	1
19	A376 6051	Decal - Paper Feed Guide	1
20	A376 3242	Antistatic Brush	1

Index No.	Part No.	Description	Q'ty Per Assembly
101	0314 0060B	Philips Pan Head Screw - M4x6	
102	0344 0060F	Philips Truss Head Screw - M4x6	
103	0344 0080F	Philips Truss Head Screw - M4x8	
104	0951 5010B	Philips Screw With Washer - M5x10	
105	0972 4006W	Philips Polycarbonate Screw - M4x6	
106	0354 0060B	Screw - M4x6	



2. ORIGINAL FEED SECTION 1 (A376)

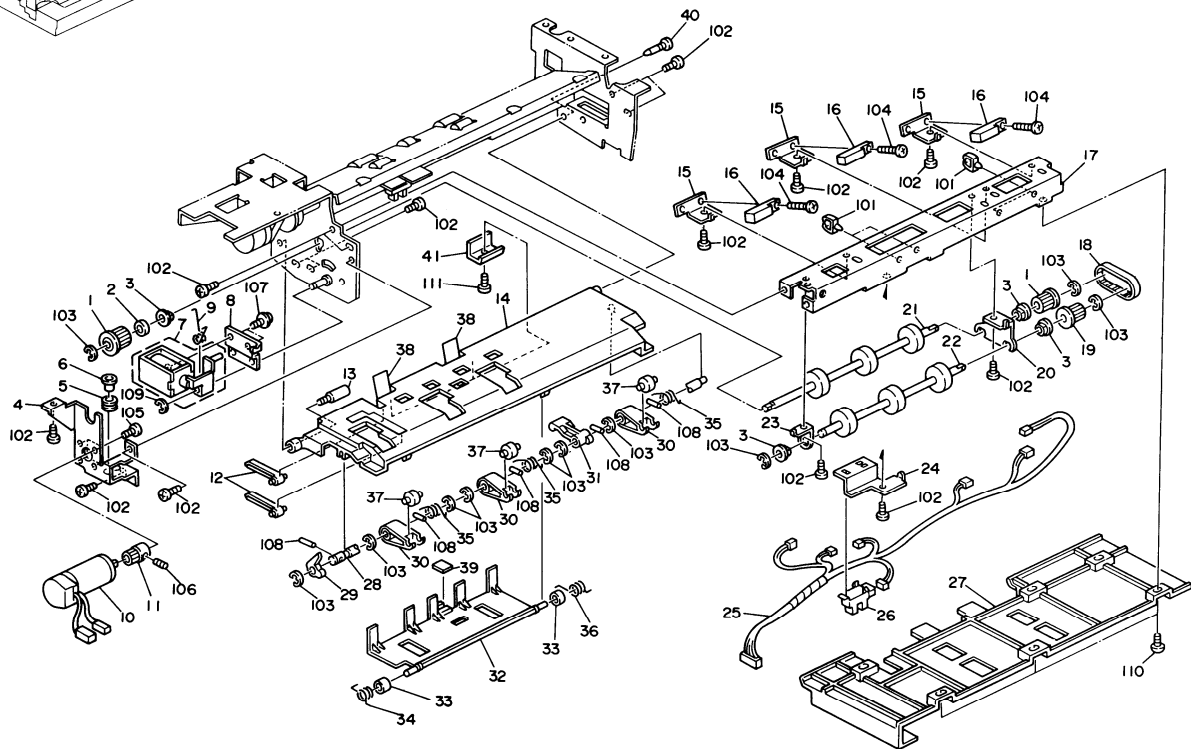
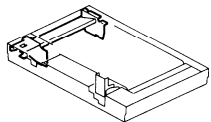


2. ORIGINAL FEED SECTION 1 (A376)

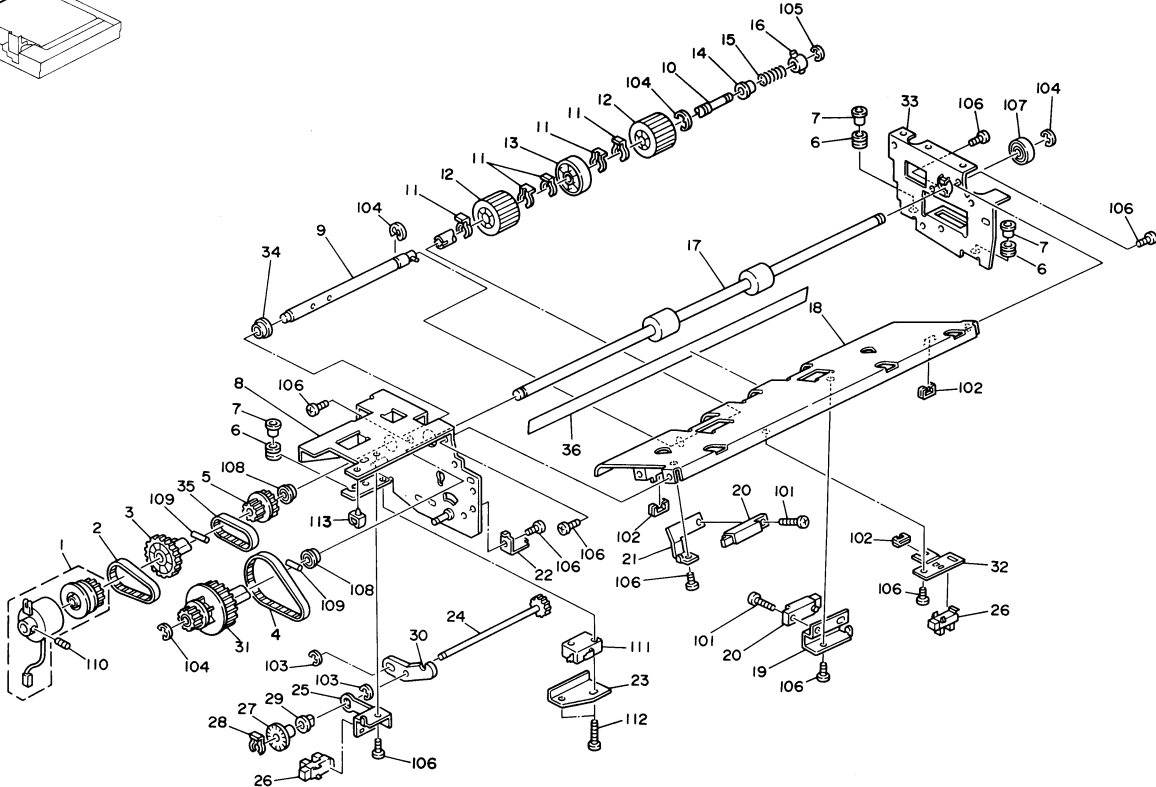
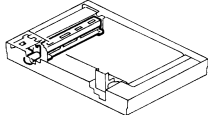
Index No.	Part No.	Description	Q'ty Per Assembly
1	A376 1235	Original Feed-out Stay	1
2	A376 1565	Idle Roller Arm	2
3	A376 1223	Bracket -idle Roller Arm	2
4	AA12 0032	Antistatic Brush	1
5	A376 1561	Idle Roller	1
6	A376 1211	Lower Guide Plate	1
7	A376 1215	Shaft Holder	1
8	A376 9501	Separation Belt - 4pcs/set	2
9	A376 1476	Timing Pulley-27Z	2
10	A376 1479	Transport Belt Bracket	2
11	A376 1477	Timing Pulley-27Z	2
12	A376 1499	Friction Belt Drive Shaft	1
13	A376 1483	Driven Shaft-Friction Belt	2
14	A376 1473	Pressure Spring- Friction Belt	4
15	A458 2161	Bushing-6x8x6	4
16	5447 2681	Snap Ring	4
17	5053 0447	Bushing-6mm	6
18	A376 1504	Gear-24Z	1
19	A376 1519	Spring Collar	4
20	A376 1518	Pressure Spring- Clutch Gear	1
21	A376 1512	Clutch Disk	1
22	A376 1517	Pressure Spring - Clutch Gear	1
23	A376 1496	Clutch Gear	1
24	A376 1537	Lever Shaft	1
25	A376 1521	Solenoid Lever - Friction Belt	1
26	AA14 3062	Shoulder Screw - M4	1
27	A376 1535	DC Solenoid - 24V 850GF	1
28	A376 1567	Arm Pressure Spring	2

Index No.	Part No.	Description	Q'ty Per Assembly
101	0720 0030B	Retaining Ring - M3	
102	0314 0060B	Philips Pan Head Screw - M4x6	
103	0344 0060F	Philips Truss Head Screw - M4x6	
104	0720 0040B	Retaining Ring - M4	
105	0951 3004B	Philips Screw With Flat Washer - M3x4	

3. ORIGINAL FEED SECTION 2 (A376)



4. ORIGINAL FEED SECTION 3 (A376)



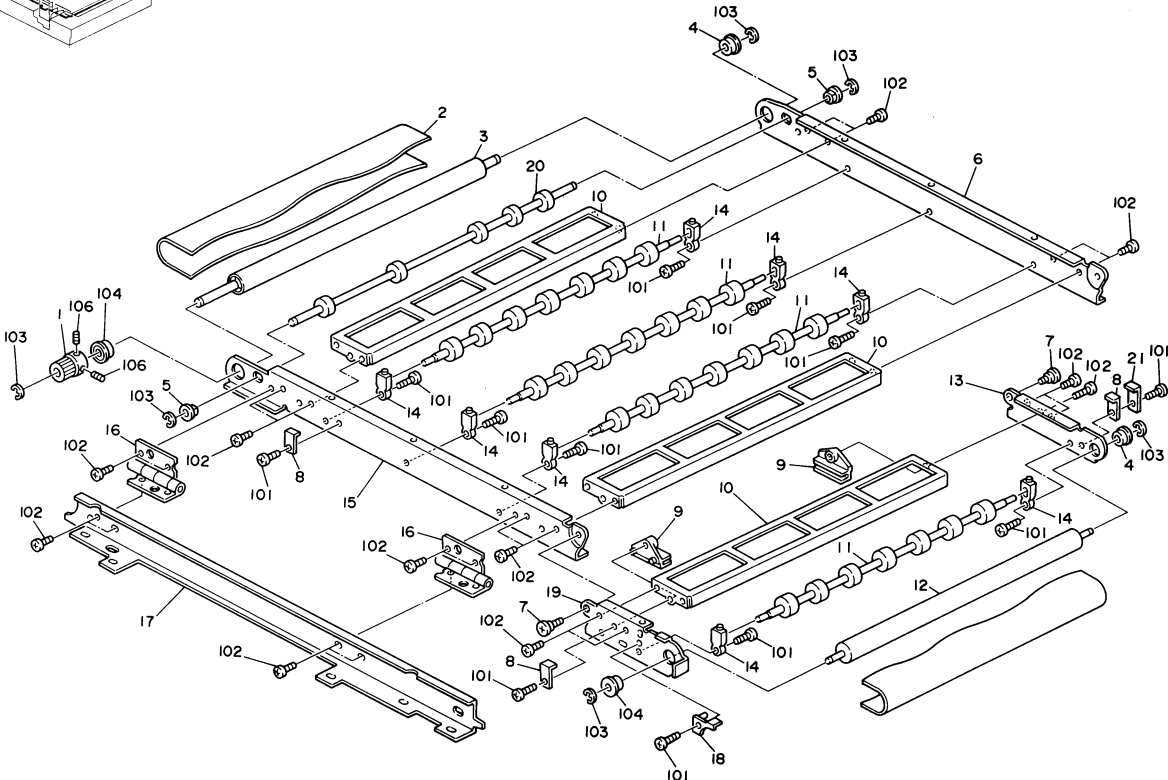
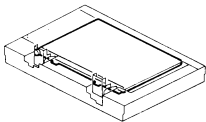
4. ORIGINAL FEED SECTION 3 (A376)

Index No.	Part No.	Description	Q'ty Per Assembly
1	A376 1427	Feed-in Clutch	1
2	A376 1553	Timing Belt - B60S3M144	1
3	A376 1432	Gear - Z46	1
4	A376 1623	Timing Belt - B60S2M186	1
5	A376 1419	Timing Pulley - 22Z/23Z	1
6	A376 4131	Cushion - T1	3
7	A376 4137	Cushion Collar	3
8	A376 1121	Rear Side Plate	1
9	A376 1415	Feed Roller Drive Shaft	1
10	A376 1457	Feed Roller Driven Shaft	1
11	5215 2621	Snap Ring - M6	5
12	A376 1445	Feed Roller	2
13	A376 1447	Middle Feed Roller	1
14	A376 1465	Feed Roller Bushing	1
15	A376 1467	Feed Roller Pressure Spring	1
16	A376 1461	Feed Roller Bushing	1
17	A376 1545	Idle Roller	1
18	A376 1160	Inner Separation Guide	1
19	A376 1197	Left Bracket - Paper Size Sensor	1
20	AW01 0027	Photosensor - ON2530 CT	2
21	A376 1193	Registration Sensor Bracket	1
22	A376 1137	Magnet Catch Bracket	1
23	A376 1134	Safety Switch Bracket	1
24	A376 1589	Encoder Shaft	1
25	A376 1597	Encoder Bracket	1
26	AW02 0021	Photointerruptor - 175487-3	2
27	A376 1585	Encoder	1
28	5206 2686	Snap Ring	1
29	H014 2131	Bushing - M4	1
30	A376 1593	Encoder Arm	1
31	A376 1549	Timing Pulley - 60Z/20Z	1
32	A376 1195	Registration Sensor Bracket	1
33	A376 1115	Front Side Plate	1
34	5053 0223	Bushing - 8mm	1
35	A376 1423	Timing Belt - B60S2M126	1



Index No.	Part No.	Description	Q'ty Per Assembly
36	A376 1187	Separation Guide Mylar	1
101	0313 0100B	Philips Pan Head Screw - M3x10	
102	1105 0328	Harness Clamp - ES-0505	
103	0720 0030B	Retaining Ring - M3	
104	0720 0060B	Retaining Ring - M6	
105	0720 0040B	Retaining Ring - M4	
105	0720 0040B	Retaining Ring - M4	
106	0314 0060B	Philips Pan Head Screw - M4x6	
107	0740 3008	Ball Bearing - 8x22x7	
108	0742 3808	Ball Bearing - 8x16x5	
109	0632 0120	Parallel Pin - M2x12	
110	0574 0050E	Hexagon Headless Set Screw - M4x5	
111	1204 1123	Microswitch	
112	0313 0140B	Philips Pan Head Screw - M3x14	
113	1105 0310	Wire Clamp	

5. TRANSPORT SECTION (A376)

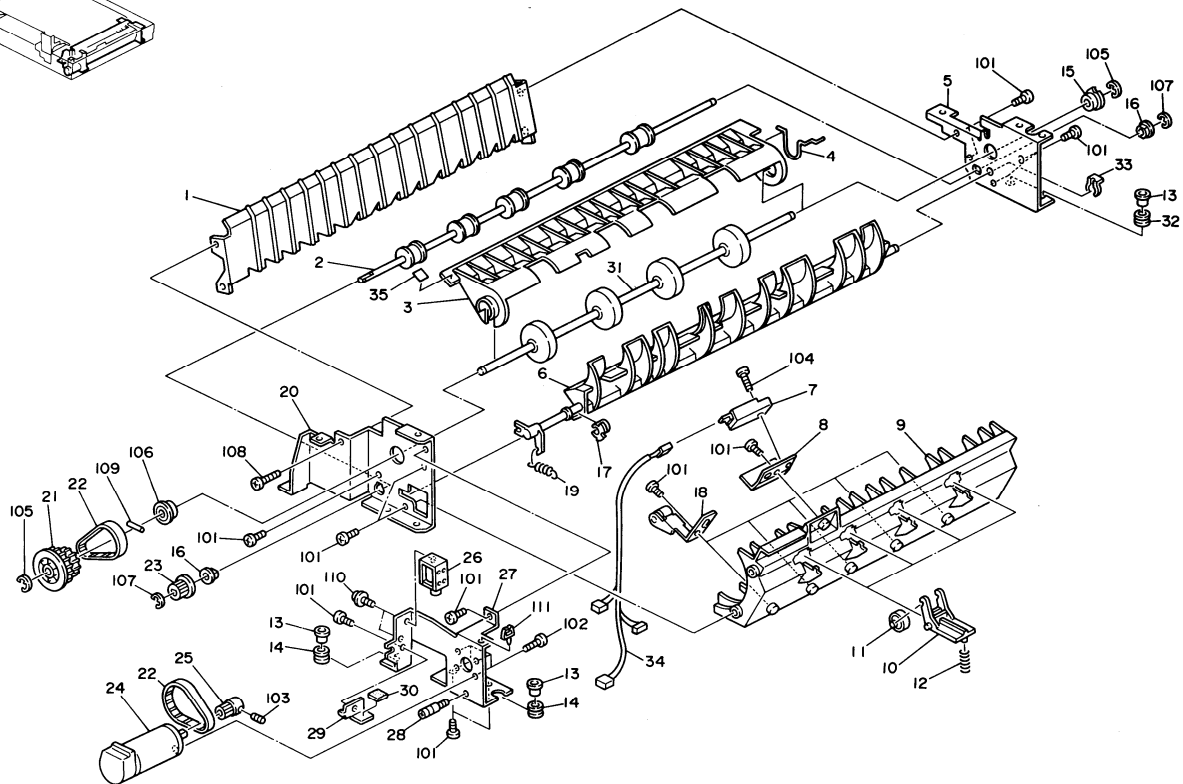
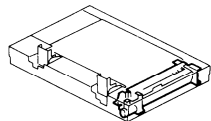


5. TRANSPORT SECTION (A376)

Index No.	Part No.	Description	Q'ty Per Assembly
1	A376 2521	Timing Pulley - 20Z	1
2	A376 2195	Transport Belt	1
3	A376 2091	Belt Drive Roller	1
4	A422 1078	Bushing - 6x12x4mm	2
5	5053 0447	Bushing - 6mm	2
6	A376 2117	Front Side Plate	1
7	AA14 3062	Shoulder Screw - M4	2
8	A376 2155	Transport Unit Upper Stopper	3
9	A376 2147	Transport Belt Guide	2
10	A376 2128	Transport Stay	3
11	A376 2096	Belt Pressure Roller	4
12	A376 2132	Belt Driven Roller	1
13	A376 2152	Front Tension Bracket	1
14	A376 2163	Pressure Roller Bushing	8
15	A376 2125	Rear Side Plate	1
16	A376 2211	Transport Unit Hinge	2
17	A376 4121	Rear Frame	1
18	A376 2157	Transport Unit Rear Stopper	1
19	A376 2156	Rear Tension Bracket	1
20	A376 2092	Belt Support Roller	1
21	A376 2158	Stopper Spacer	1

Index No.	Part No.	Description	Q'ty Per Assembly
101	0314 0080B	Philips Pan Head Screw - M4x8	
102	0314 0060B	Philips Pan Head Screw - M4x6	
103	0720 0040B	Retaining Ring - M4	
104	0742 3808	Ball Bearing - 8x16x5	

6. INVERTER AND EXIT SECTION (A376)

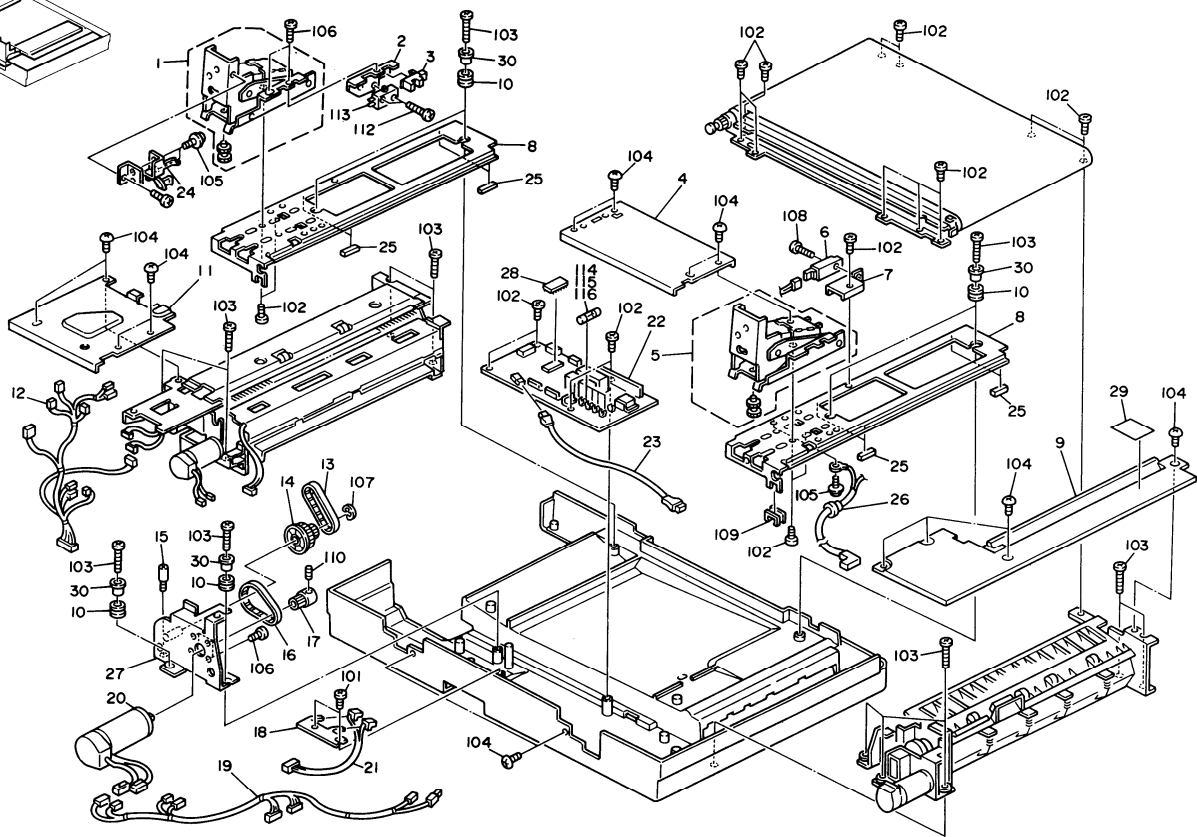
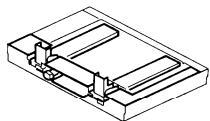


6. INVERTER AND EXIT SECTION (A376)

Index No.	Part No.	Description	Q'ty Per Assembly
1	A376 3145	Inverter Guide Plate	1
2	A376 3126	Feed-out Roller	1
3	A376 3137	Inverter Guide	1
4	A376 3537	Inverter Guide Spring	1
5	A376 3111	Front Side Plate	1
6	A376 3142	Inverter Pawl	1
7	AW01 0027	Photosensor - ON2530 CT	1
8	A376 3161	Sensor Bracket	1
9	A376 3147	Upper Feed-out Guide	1
10	A376 3154	Inverter Roller Arm	4
11	A376 3153	Lower Driven Roller	4
12	A376 3611	Feed-out Roller Spring	4
13	A376 4137	Cushion Collar	3
14	A376 4132	Cushion - T1,6	2
15	5420 4860	Bushing - 8mm	1
16	5053 0447	Bushing - 6mm	2
17	A376 3172	Inverter Pawl Bushing	1
18	A376 3211	Feed-out Driven Roller	5
19	A376 3612	Inverter Lever Spring	1
20	A376 3121	Rear Side Plate	1
21	A376 3515	Timing Pulley - 48Z/22Z	1
22	A376 3598	Timing Belt - B40S2M152	2
23	A376 3516	Timing Pulley -21 Z	1
24	AX06 0092	DC Motor - DC24V 19W	1
25	A376 3532	Timing Pulley - 18Z .	1
26	A376 3530	Inverter Solenoid	1
27	A376 3512	Feed-out Motor Bracket	1
28	A409 1150	Spring Anchor	1
29	A376 3531	Solenoid Stopper	1
30	A376 3541	Solenoid Cushion	1
31	A376 3125	Inverter Roller	1
32	A376 4131	Cushion - T1	1
33	5447 2681	Snap Ring	1
34	A376 5753	Feed-out Harness	1
35	A054 2977	Decal - Vertical Transport Guide	1

Index No.	Part No.	Description	Q'ty Per Assembly
101	0314 0060B	Philips Pan Head Screw - M4x6	
102	0313 0060B	Philips Pan Head Screw - M3x6	
103	0574 0050E	Hexagon Headless Set Screw - M4x5	
104	0313 0100B	Philips Pan Head Screw - M3x10	
105	0720 0060B	Retaining Ring - M6	
106	0742 3808	Ball Bearing - 8x16x5	
107	0720 0040B	Retaining Ring - M4	
108	0314 0200B	Philips Pan Head Screw - M4x20	
109	0633 0160E	Pin - 3x16mm	
110	0951 3004B	Philips Screw With Flat Washer -M3x4	
111	1105 0199	Clamp	

7. ELECTRICAL SECTION (A376)

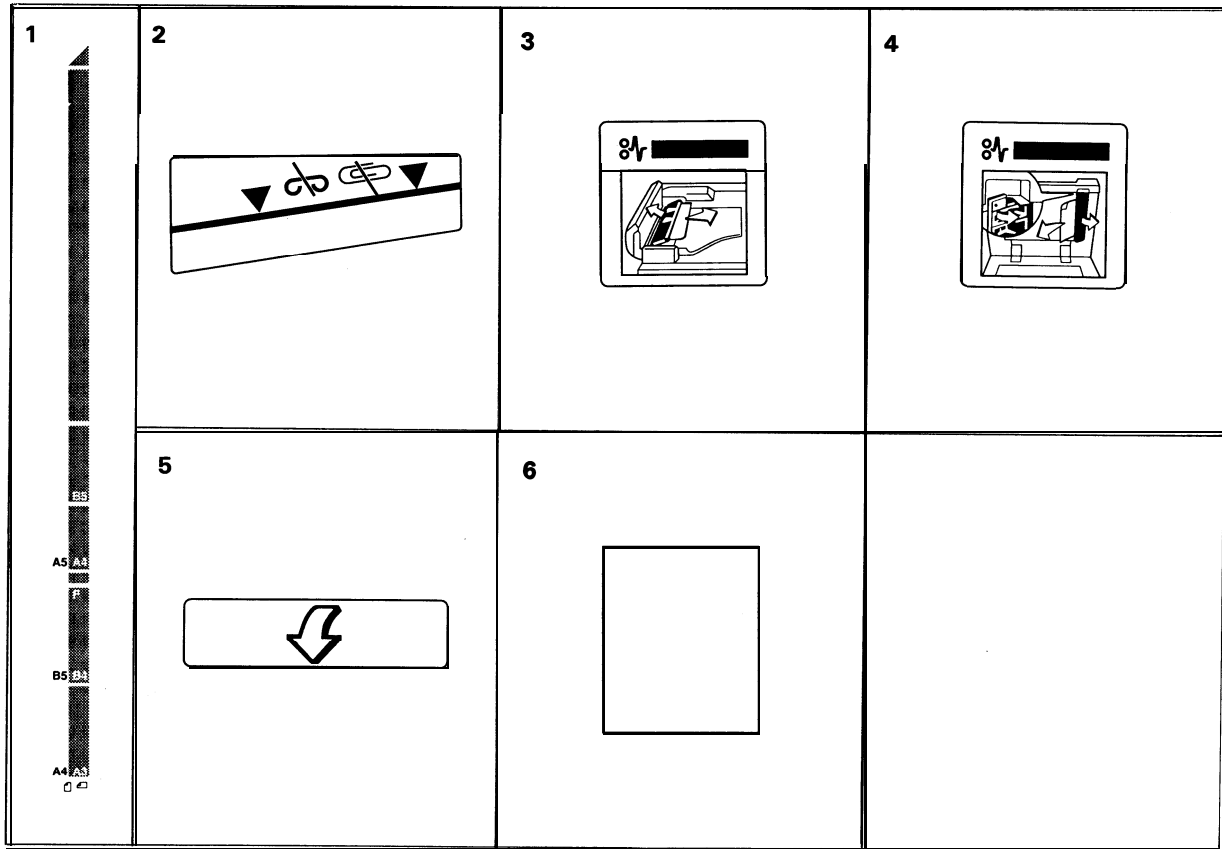


7. ELECTRICAL SECTION (A376)

Index No.	Part No.	Description	Q'ty Per Assembly
1	A376 4160	Left Hinge	1
2	A376 4117	Reset Switch Bracket	1
3	AW02 0021	Photointerruptor - 175487-3	1
4	A376 4646	Lower Middle Cover	1
5	A376 4190	Right Hinge	1
6	AW01 0027	Photosensor - ON2530 CT	1
7	A376 4115	Feed-out Sensor Bracket	1
8	A376 4111	Hinge Stay	2
9	A376 4621	Lower Exit Cover	1
10	A376 4132	Cushion - T1,6	6
11	A376 4641	Left Lower Cover	1
12	A376 5752	Solenoid Harness	1
13	AA04 3235	Timing Belt - B60S3M201	1
14	A376 2524	Timing Pulley - 60Z/20Z	1
15	A376 2514	Joint Stud	1
16	AA04 3096	Timing Belt - 4X160	1
17	A376 1615	Timing Pulley - 22Z	1
18	A376 4119	Led Bracket	1
19	A376 5754	Motor Relay Harness	1
20	AX06 0092	DC Motor- DC24V 19W	1
21	A376 5757	LED Harness	1
22	A376 5551	Main Board	1
23	AW03 0032	Optical Fiber	1
24	A376 4916	Reset Switch Lever	1
25	5446 1665	Rubber Pad - Exposure Glass	8
26	A376 5755	Interface Harness	1
27	A376 2511	Belt Drive Motor Bracket	1
28	A376 6821	IC - AM27C256-1500DC	1
29	A376 6041	Decal - Misfeed Removal	1
30	A376 4137	Cushion Collar	6

Index No.	Part No.	Description	Q'ty Per Assembly
101	0414 0082B	Binding Self Tapping Screw - M4x8	
102	0314 0060B	Phillips Pan Head Screw - M4x6	
103	0314 0100B	Phillips Pan Head Screw - M4x10	
104	0344 0060F	Phillips Truss Head Screw - M4x6	
105	0951 4008B	Phillips Screw With Washer - M4x8	
106	0313 0060B	Phillips Pan Head Screw - M3x6	
107	0720 0060B	Retaining Ring - M6	
108	0313 0100B	Phillips Pan Head Screw - M3x10	
109	1105 0328	Harness Clamp - ES-0505	
110	0574 0050E	Hexagon Headless Set Screw - M4x5	
111	1106 0289	Bushing - SR-5N-1	
112	0313 0140B	Phillips Pan Head Screw - M3x14	
113	1204 0768	Microswitch	
114	1107 0750	Fuse -3.15A 250V	
115	1107 0384	Fuse - 0.63A	
116	1107 0404	Fuse - 0.3A 250V	

8. DECAL AND DOCUMENT (A376)



8. DECAL AND DOCUMENT (A376)

Index No.	Part No.	Description	Q'ty Per Assembly
1	A376 6016	Decal - Original Size - LT	1
1	A376 6011	Decal - Original Size - A4	1
2	A376 6021	Decal - Original Table	1
3	A376 6031	Decal - Misfeed Removal	1
4	A376 6041	Decal - Misfeed Removal	1
5	A376 6051	Decal - Paper Feed Guide	1
6	A054 2977	Decal - Vertical Transport Guide	1

Index No.	Part No.	Description	Q'ty Per Assembly
-----------	----------	-------------	-------------------

PARTS INDEX

Part No.	Description	Page and Index No.
A376 1115	Front Side Plate	11-33
A376 1121	Rear Side Plate	11- 8
A376 1134	Safety Switch Bracket	11-23
A376 1137	Magnet Catch Bracket	11-22
A376 1139	Feed-in Motor Bracket	9- 4
A376 1141	Upper Paper Feed Stay	9- 17
A376 1145	Front Bracket - Pick-up Roller	9-20
A376 1147	Original Sensor Bracket	9-24
A376 11 49	Pick-up Relay Roller Bracket	9-23
A376 11 60	Inner Separation Guide	11- 18
A376 1187	Separation Guide Mylar	11- 36
A376 1189	Right Bracket - Paper Size Sensor	9- 15
A376 1193	Registration Sensor Bracket	11- 21
A376 1195	Registration Sensor Bracket	11-32
A376 1197	Left Bracket - Paper Size Sensor	11- 19
A376 1211	Lower Guide Plate	7- 6
A376 1215	Shaft Holder	7- 7
A376 1223	Bracket - Idle Roller Arm	7- 3
A376 1235	Original Feed-out Stay	7- 1
A376 1245	Entrance Original Guide	9-27
A376 1250	Upper Registration Guide	9- 14
A376 1252	Feed Roller Guide	9-38
A376 1253	Holder - Feed Roller Guide	9-41
A376 1255	Original Stopper	9-32
A376 1257	Spacer - M4x6x6	9-33
A376 1259	Sensor Feeler	9- 12
A376 1261	Inverter Guide	5- 3
A376 1264	Pressure Spring	9-36
A376 1265	Pressure Spring	9-34
A376 1283	Pick-up Roller	9-22
A376 1291	Rear Timing Pulley	9- 1
A376 1292	Front Timing Pulley	9- 19
A376 1295	Spacer - M6x10X5	9- 2
A376 1311	Rear Pick-up Roller	9-21
A376 1319	Timing Belt - B60S2M98	9- 18

Part No.	Description	Page and Index No.
A376 1331	Original Pressure Shaft	9-28
A376 1335	Release Spring	9-35
A376 1343	Original Pressure Roller	9-37
A376 1347	Original Pressure Arm	9-30
A376 1355	Original Stopper Arm	9-31
A376 1363	Front Lever - Original Stopper	9-29
A376 1382	Release Spring	9- 9
A376 1384	Rear Lever - Original Stopper	9- 7
A376 1385	Stopper Solenoid Bracket	9- 8
A376 1415	Feed Roller Drive Shaft	11- 9
A376 1419	Timing Pulley - 222/232	11- 5
A376 1423	Timing Belt - B60S2M126	11-35
A376 1427	Feed-in Clutch	11- 1
A376 1432	Gear -246	11- 3
A376 1445	Feed Roller	11- 12
A376 1447	Middle Feed Roller	11- 13
A376 1457	Feed Roller Driven Shaft	11- 10
A376 1461	Feed Roller Bushing	11- 16
A376 1465	Feed Roller Bushing	11- 14
A376 1467	Feed Roller Pressure Spring	11- 15
A376 1473	Pressure Spring - Friction Belt	7- 14
A376 1476	Timing Pulley -272	7- 9
A376 1477	Timing Pulley -272	7- 11
A376 1479	Transport Belt Bracket	7- 10
A376 1483	Driven Shaft - Friction Belt	7- 13
A376 1496	Clutch Gear	7-23
A376 1499	Friction Belt Drive Shaft	7- 12
A376 1504	Gear -242	7- 18
A376 1512	Clutch Disk	7-21
A376 1517	Pressure Spring - Clutch Gear	7-22
A376 1518	Pressure Spring - Clutch Gear	7-20
A376 1519	Spring Collar	7- 19
A376 1521	Solenoid Lever - Friction Belt	7-25
A376 1535	DC Solenoid - 24V 850GF	7-27
A376 1537	Lever Shaft	7-24

Part No.	Description	Page and Index No.
A376 1545	Idle Roller	11- 17
A376 1549	Timing Pulley-60Z/20Z	11-31
A376 1553	Timing Belt- B60S3M144	11- 2
A376 1561	Idle Roller	7- 5
A376 1565	Idle Roller Arm	7- 2
A376 1567	Arm Pressure Spring	7-28
A376 1585	Encoder	11-27
A376 1589	EncoderShaft	11-24
A376 1593	EncoderArm	11-30
A376 1597	Encoder Bracket	11- 25
A376 1615	Timing Pulley-22Z	9- 11
A376 1615	Timing Pulley-22Z	17- 17
A376 1623	Timing Belt-B60S2M186	11- 4
A376 2091	Belt Drive Roller	13- 3
A376 2092	Belt Support Roller	13-20
A376 2096	Belt Pressure Roller	13- 11
A376 2117	Front Side Plate	13- 6
A376 2125	Rear Side Plate	13- 15
A376 2128	Transport Stay	13- 10
A376 2132	Belt Driven Roller	13- 12
A376 2147	Transport Belt Guide	13- 9
A376 2152	Front Tension Bracket	13- 13
A376 2155	Transport Unit Upper Stopper	13- 8
A376 2156	Rear Tension Bracket	13- 19
A376 2157	Transport Unit Rear Stopper	13- 18
A376 2158	Stopper Spacer	13- 21
A376 2163	Pressure Roller Bushing	13- 14
A376 2195	Transport Belt	13- 2
A376 2211	Transport Unit Hinge	13- 16
A376 2511	Belt Drive Motor Bracket	17-27
A376 2514	Joint Stud	17- 15
A376 2521	Timing Pulley - 20Z	13- 1
A376 2524	Timing Pulley - 60Z/20Z	17- 14
A376 3111	Front Side Plate	15- 5
A376 3121	Rear Side Plate	15-20

Part No.	Description	Page and Index No.
A376 3125	Inverter Roller	15-31
A376 3126	Feed-out Roller	15- 2
A376 3137	Inverter Guide	15- 3
A376 3142	Inverter Pawl	15- 6
A376 3145	Inverter Guide Plate	15- 1
A376 3147	Upper Feed-out Guide	15- 9
A376 3153	Lower Driven Roller	15- 11
A376 3154	Inverter Roller Arm	15- 10
A376 3161	Sensor Bracket	15- 8
A376 3172	Inverter Pawl Bushing	15- 17
A376 3211	Feed-out Driven Roller	15- 18
A376 3242	Antistatic Brush	5-20
A376 3512	Feed-out Motor Bracket	15-27
A376 3515	Timing Pulley - 482/222	15-21
A376 3516	Timing Pulley -212	15-23
A376 3530	Inverter Solenoid	15-26
A376 3531	Solenoid Stopper	15-29
A376 3532	Timing Pulley -182	15-25
A376 3537	Inverter Guide Spring	15- 4
A376 3541	Solenoid Cushion	9-39
A376 3541	Solenoid Cushion	15-30
A376 3598	Timing Belt - B40S2M152	15-22
A376 3611	Feed-out Roller Spring	15- 12
A376 3612	Inverter Lever Spring	15- 19
A376 4111	Hinge Stay	17- 8
A376 4115	Feed-out Sensor Bracket	17- 7
A376 4117	Reset Switch Bracket	17- 2
A376 4119	Led Bracket	17- 18
A376 4121	Rear Frame	13- 17
A376 4125	Grip Bracket	5- 15
A376 4131	Cushion - T1	11- 6
A376 4131	Cushion - T1	15- 32
A376 4132	Cushion - T1,6	9- 5
A376 4132	Cushion - T1,6	15- 14
A376 4132	Cushion - T1,6	17- 10

Part No.	Description	Page and Index No.
A376 4137	Cushion Collar	9- 6
A376 4137	Cushion Collar	11- 7
A376 4137	Cushion Collar	15- 13
A376 4137	Cushion Collar	17-30
A376 4160	Left Hinge	17- 1
A376 4190	Right Hinge	17- 5
A376 4501	Upper Cover	5- 10
A376 4521	Front Lower Cover	5- 11
A376 4541	Left Cover - A4	5- 1
A376 4543	Left Cover - LT	5- 1
A376 4561	Original Table	5- 4
A376 4581	Side Fence Rail	5- 5
A376 4591	Side Fence	5- 6
A376 4599	Side Fence Pad	5- 7
A376 4611	Main Board Cover	5" 9
A376 4621	Lower Exit Cover	17- 9
A376 4641	Left Lower Cover	17- 11
A376 4646	Lower Middle Cover	17- 4
A376 4651	Indicator Panel	5- 18
A376 4911	Stepped Screw - Left Hinge	5- 16
A376 4916	Reset Switch Lever	17-24
A376 5551	Main Board	17-22
A376 5751	Sensor Harness	9-25
A376 5752	Solenoid Harness	17- 12
A376 5753	Feed-out Harness	15-34
A376 5754	Motor Relay Harness	17- 19
A376 5755	Interface Harness	17-26
A376 5757	LED Harness	17-21
A376 6011	Decal - Original Size - A4	5- 2
A376 6011	Decal - Original Size - A4	19- 1
A376 6016	Decal - Original Size - LT	5- 2
A376 6016	Decal - Original Size - LT	19- 1
A376 6021	Decal - Original Table	5- 8
A376 6021	Decal - Original Table	19- 2
A376 6031	Decal - Misfeed Removal	5- 17

Part No.	Description	Page and Index No.
A376 6031	Decal - Misfeed Removal	19- 3
A376 6041	Decal - Misfeed Removal	17-29
A376 6041	Decal - Misfeed Removal	19- 4
A376 6051	Decal - Paper Feed Guide	5- 19
A376 6051	Decal - Paper Feed Guide	19- 5
A376 6821	IC - AM27C256-1500DC	17-28
A376 9501	Separation Belt - 4pcs/set	7- 8

Part No.	Description	Page and Index No.
AA04 3096	Timing Belt - 4X160	17- 16
AA04 3235	Timing Belt - B60S3M201	17- 13
AA12 0032	Antistatic Brush	7- 4
AA14 3062	Shoulder Screw - M4	7-26
AA14 3062	Shoulder Screw - M4	13- 7
AW01 0027	Photosensor - ON2530 CT	9- 16
AW01 0027	Photosensor - ON2530 CT	11-20
AW01 0027	Photosensor - ON2530 CT	15- 7
AW01 0027	Photosensor - ON2530 CT	17- 6
AW02 0021	Photointerruptor - 175487-3	9-26
AW02 0021	Photointerruptor - 175487-3	11-26
AW02 0021	Photointerruptor - 175487-3	17- 3
AW03 0032	Optical Fiber	17-23
AX06 0082	Belt Drive Motor - DC19W	9- 10
AX06 0092	DC Motor - DC24V 19W	15- 24
AX06 0092	DC Motor - DC24V 19W	17-20
A054 2977	Decal - Vertical Transport Guide	15-35
A054 2977	Decal - Vertical Transport Guide	19- 6
A096 1281	Rear Top Cover	5- 12
A409 1150	Spring Anchor	15-28
A422 1078	Bushing - 6x12x4mm	13- 4
A458 2161	Bushing - 6x8x6	7- 15
A469 3350	Guide Stud	9- 13
H014 2131	Bushing - M4	11-29
5053 0223	Bushing - 8mm	11-34
5053 0447	Bushing - 6mm	7- 17
5053 0447	Bushing - 6mm	9- 3
5053 0447	Bushing - 6mm	13- 5
5053 0447	Bushing - 6mm	15- 16
5206 2686	Snap Ring	11-28
5215 2621	Snap Ring - M6	11- 11
5420 4860	Bushing - 8mm	15- 15
5446 1665	Rubber Pad - Exposure Glass	17- 25
5446 2824	Screw - Duplex Guide Plate	5- 14
5446 2824	Screw - Duplex Guide Plate	9-40

Part No.	Description	Page and Index No.
5447 2681	Snap Ring	7- 16
5447 2681	Snap Ring	15-33
5875 2088	Shoulder Screw - M4	5- 13

Part No.	Description	Page and Index No.
0313 0060B	Philips Pan Head Screw - M3x6	9-105
0313 0060B	Philips Pan Head Screw - M3x6	15-102
0313 0060B	Philips Pan Head Screw - M3x6	17-106
0313 0100B	Philips Pan Head Screw - M3x10	9-104
0313 0100B	Philips Pan Head Screw - M3x10	11-101
0313 0100B	Philips Pan Head Screw - M3x10	15-104
0313 0100B	Philips Pan Head Screw - M3x10	17-108
0313 0140B	Philips Pan Head Screw - M3x14	11-112
0313 0140B	Philips Pan Head Screw - M3x14	17-112
0314 0060B	Philips Pan Head Screw - M4x6	5-101
0314 0060B	Philips Pan Head Screw - M4x6	7-102
0314 0060B	Philips Pan Head Screw - M4x6	9-102
0314 0060B	Philips Pan Head Screw - M4x6	11-106
0314 0060B	Philips Pan Head Screw - M4x6	13-102
0314 0060B	Philips Pan Head Screw - M4x6	15-101
0314 0060B	Philips Pan Head Screw - M4x6	17-102
0314 0080B	Philips Pan Head Screw - M4x8	13-101
0314 0100B	Philips Pan Head Screw - M4x10	17-103
0314 0200B	Philips Pan Head Screw - M4x20	15-108
0344 0060F	Philips Truss Head Screw - M4x6	5-102
0344 0060F	Philips Truss Head Screw - M4x6	7-103
0344 0060F	Philips Truss Head Screw - M4x6	17-104
0344 0080F	Philips Truss Head Screw - M4x8	5-103
0344 0080F	Philips Truss Head Screw - M4x8	9-110
0354 0060B	Screw - M4x6	5-106
0414 0082B	Binding Self Tapping Screw - M4x8	9-111
0414 0082B	Binding Self Tapping Screw - M4x8	17-101
0574 0050E	Hexagon Headless Set Screw - M4x5	9-106
0574 0050E	Hexagon Headless Set Screw - M4x5	11-110
0574 0050E	Hexagon Headless Set Screw - M4x5	15-103
0574 0050E	Hexagon Headless Set Screw - M4x5	17-110
0632 0100	Parallel Pin - M2x10	9-108
0632 0120	Parallel Pin - M2x12	11-109
0633 0160E	Pin - 3x16mm	15-109
0720 0030B	Retaining Ring - M3	7-101

Part No.	Description	Page and Index No.
0720 0030B	Retaining Ring - M3	9-109
0720 0030B	Retaining Ring - M3	11-103
0720 0040B	Retaining Ring - M4	7-104
0720 0040B	Retaining Ring - M4	9-103
0720 0040B	Retaining Ring - M4	11-105
0720 0040B	Retaining Ring - M4	11-105
0720 0040B	Retaining Ring - M4	13-103
0720 0040B	Retaining Ring - M4	15-107
0720 0060B	Retaining Ring - M6	11-104
0720 0060B	Retaining Ring - M6	15-105
0720 0060B	Retaining Ring - M6	17-107
0740 3008	Ball Bearing - 8x22x7	11-107
0742 3808	Ball Bearing - 8x16x5	11-108
0742 3808	Ball Bearing - 8x16x5	13-104
0742 3808	Ball Bearing - 8x16x5	15-106
0951 3004B	Philips Screw With Flat Washer -M3x4	7-105
0951 3004B	Philips Screw With Flat Washer -M3x4	15-110
0951 3006B	Philips Screw With Flat Washer-M3x6	9-107
0951 4008B	Philips Screw With Washer - M4x8	17-105
0951 5010B	Philips Screw With Washer - M5x10	5-104
0972 4006W	Philips Polycarbonate Screw - M4x6	5-105
1105 0199	Clamp	15-111
1105 0229	Clamp	9-101
1105 0310	Wire Clamp	11-113
1105 0328	Harness Clamp - ES-0505	11-102
1105 0328	Harness Clamp - ES-0505	17-109
1106 0289	Bushing - SR-5N-1	17-111
1107 0384	Fuse - 0.63A	17-115
1107 0404	Fuse - 0.3A 250V	17-116
1107 0750	Fuse - 3.15A 250V	17-114
1204 0768	Microswitch	17-113
1204 1123	Microswitch	11-111